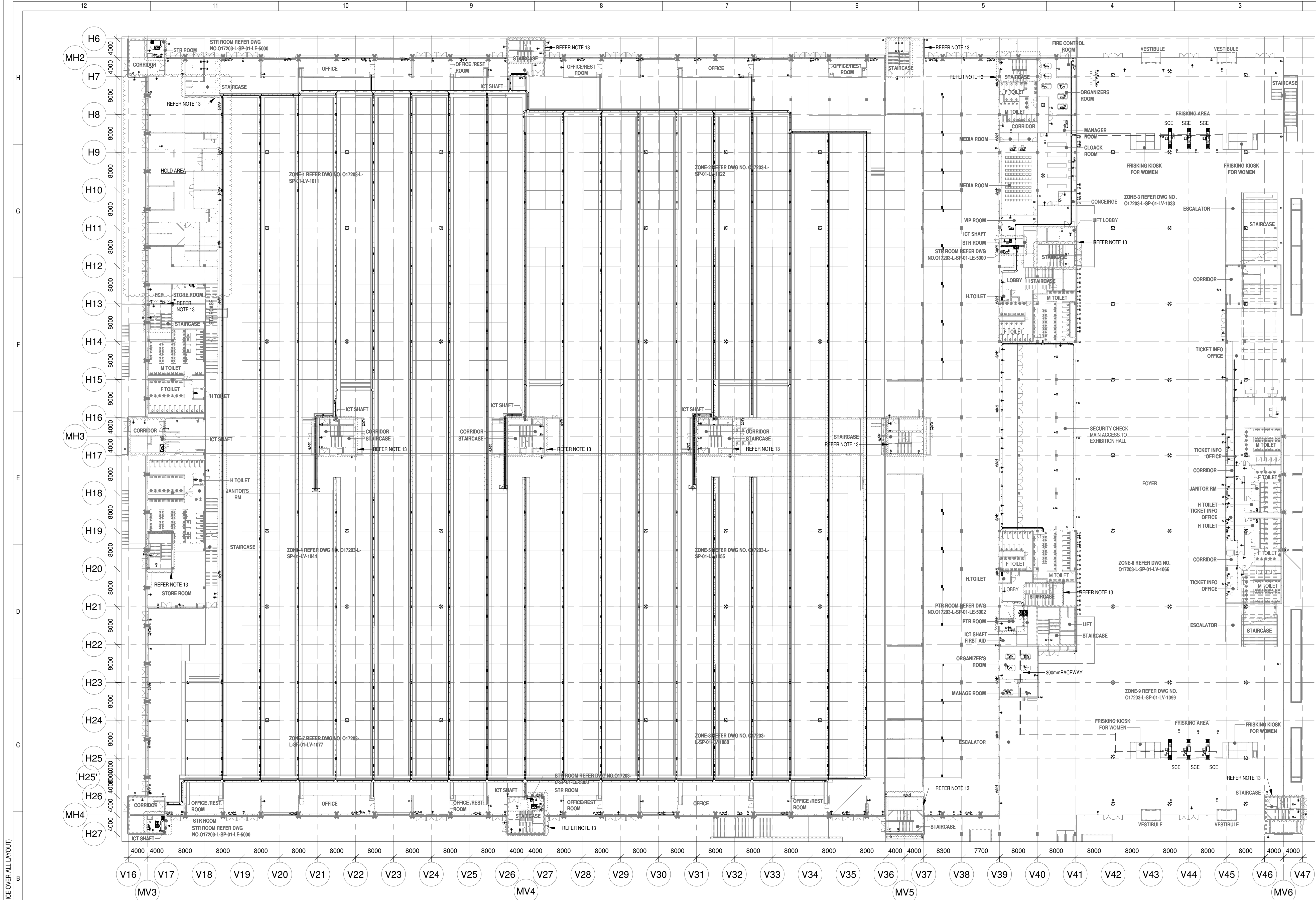
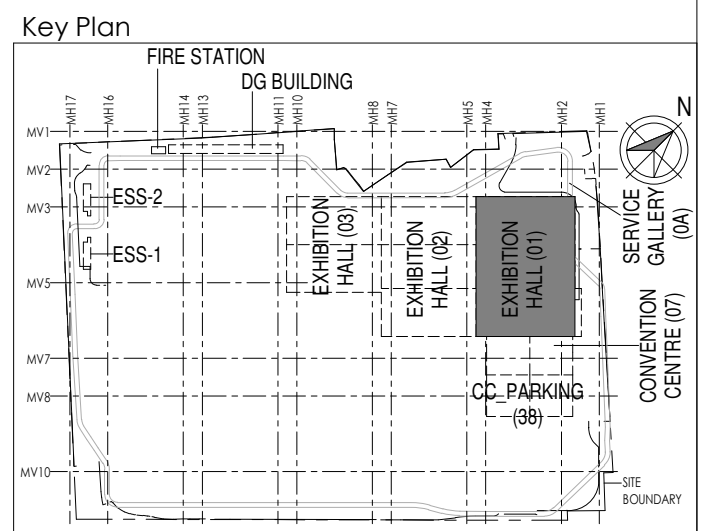


O17203 - L - SP - 01 - DV - 2000 EXHIBITION HALL 1 - Foyer GF DATA & VOICE OVER ALL LAYOUT



1
2000
GROUND FLOOR DATA & VOICE OVER ALL LAYOUT
1 : 400

- NOTES:**
- GENERAL**
- 1.CONDUITS IN EXPOSED MS CONDUIT TO BE USED.
 2. OVER FALSE CEILING UNDER FLOOR OR EMBEDDED PVC CONDUITS TO BE USED
 3. ALL CONDUITS SHOULD BE EQUIPPED WITH A PULL CORDS WITH SUITABLE TENSION POWER.
 4. PULL BOXES WITH SUITABLE SIZE SHOULD BE PROVIDED IN ALL CONDUIT SECTIONS THAT ARE CONTAINING MORE THAN TWO 90 DEGREE BENDS.
 5. ALL DEVICES LOCATIONS AND ORIENTATION ARE INDICATIVE. EXACT LOCATION SHALL BE SHOWN IN THE OER SHOP DRAWING.
 6. THIS DRAWING IS ONLY INDICATIVE AND MAY VARY ACCORDING TO SITE CONDITION AND REQUIREMENT.
 7. THE EXACT CONDUIT/TRAY ROUTING SHALL BE DECIDED AT SITE IN CONSULTATION WITH THE ENGINEER INCHARGE TO SUIT LEVEL AND SITE CONDITION.
 8. A CABLE TRAY SUPPORT MUST ALSO BE PLACED WITHIN 0.60 METERS ON EACH SIDE OF ANY CONNECTION TO A FITTING.
 9. A MINIMUM SEPARATION DISTANCE OF 300MM AND SHOULD BE KEPT PHYSICALLY BETWEEN LIGHT CURRENT CABLES AND MEDIUM VOLTAGE CABLES.
 10. METALLO PERFORATED TYPE HOT DIP GALVANIZED CABLE TRAY FOR ICT
 11. ALL NETWORK/CABLES CABLE TO BE CONNECTED IN STR ROOM
 12. FOR DIGITAL SIGNAGE SYSTEM, AV SYSTEM & BGM REFER AV SYSTEM LAYOUT.
 13. REFER STAIRCASE ELECTRICAL LIGHTING LAYOUT FOR ELV EQUIPMENT'S LOCATIONS IN STAIRCASE (REFER DRAWING NO O17203-E-SP-01-L1-146 TO 150)
 14. ACCESS CONTROLLER TO BE PLACED ABOVE THE DOOR- SECURED SIDE INACCESSIBLE FROM PUBLIC.
- DATA & VOICE**
1. 4 PAIR 23 AWG CAT6A UTP CABLE TO BE USED TO CONNECT RJ 45 DATA/VOICE SOCKETS TO JACK PANEL.
 2. WHEREVER POWER AND LV CABLES ARE RUNNING IN PARALLEL, THEY SHALL BE SEPARATED BY A DISTANCE OF MINIMUM 300MM.
 3. AREAS AND MEP ROOMS CABLES FOR DATA & VOICE SHALL BE TAKEN FROM CEILING CONDUIT.
 4. ALL WALL MOUNTED TELEPHONE/ DATA SOCKETS COULD BE ALIGNED AT A HEIGHT OF 750MM FROM FFL UNLESS AND OTHERWISE SPECIFIED SOCKETS ABOVE COUNTER SLABS TO BE MOUNTED AT A HEIGHT OF 900MM FROM FFL SOCKETS IN PLANT ROOMS TO BE MOUNTED AT A HEIGHT OF 900MM FOR ALL OTHER TELEPHONE AND DATA SOCKETS THE LEVEL SHALL BE MAINTAINED AS PER FURNITURE LAYOUT AND ARCHITECTURAL CONCURRENCE AS PER SITE CONDITION.
 5. TYPICALLY FOR EACH STALL 2 DATA (VOICE AND 1 FIBER (FO MM) PORT
- DAS**
1. THE DAS SYSTEM FOR MOBILE CARRIERS WILL BE DONE AFTER SITE SURVEY BY SPECIALIST ONCE STRUCTURE IS READY AND EPCC WILL ENSURE THE DAS COVERAGE.



Owner / Employer

India International Convention & Exhibition Centre Limited
Room No. 452A, Ministry of Commerce & Industry,
DIPF, Udyog Bhawan, New Delhi - 110011, India

Department of Industrial Policy and Promotion Ministry of Commerce & Industry Government of India

Knowledge Partner

Delhi Mumbai Industrial Corridor Development Corporation
Room No. 341 & 3rd Floor Hotel Anshok, Diplomatic Enclave, 508 Chankapuri, New Delhi - 110021

Employer's Representative

Employer's Engineer
Programme Management Consultant (PMC)

AECOM

Preliminary Engineering Architecture Consultants (PEAC)

idom
Av. Del Monasterio de El Escorial, 4,
28049 Madrid, Spain

CPKUREJA ARCHITECTS
No.D-1, Ashwini Building, Green Park,
New Delhi, Delhi 110016, India

EPC Contractor

L&T Construction
Buildings & Factories
Mount Poonamallee Road, Manapakkam,
P.O.No.779, Chennai - 600 089

EPC Contractor's Representatives

Design Consultant
Engineering Design and Research Center (EDRC)
L&T Construction - Buildings & Factories

Architectural Consultant

ARCOP Arcop Associates Pvt. Ltd.
A-15, Pamposh Enclave, G.K-1
New Delhi, Delhi 110048, India

Structural Proof Consultant

Indian Institute of Technology (IIT) Madras
Sardar Patel Rd, Opposite to C. L.R.I, Adyar, Chennai,
Tamil Nadu 600036

MEP Proof Consultant

egis Egis India Consulting Engineers Pvt. Ltd.
Plot No. 66, Sector 32, Institutional Area,
Opp. Zenith Solutions, Gurgaon,
Haryana 122001

ICT Proof Consultant

CCR CCR Consulting Engineers Pvt. Ltd.
#47/1, 3rd floor, Narayana Arcade,
Subbaramachetty Road, Velupillai Circle,
Basavanagudi, Bengaluru - 560004

Certification

REV	DESCRIPTION	DATE	DSGN	DRWN	CHKD	APPD
R0	ISSUED AS GOOD FOR CONSTRUCTION	16-08-2019	SP	PSY	MSK	GNR

Revisions

REV	DESCRIPTION	DATE	DSGN	DRWN	CHKD	APPD
R0	ISSUED AS GOOD FOR CONSTRUCTION	16-08-2019	SP	PSY	MSK	GNR

Revisions

REV	DESCRIPTION	DATE	DSGN	DRWN	CHKD	APPD
R0	ISSUED AS GOOD FOR CONSTRUCTION	16-08-2019	SP	PSY	MSK	GNR

Revisions

REV	DESCRIPTION	DATE	DSGN	DRWN	CHKD	APPD
R0	ISSUED AS GOOD FOR CONSTRUCTION	16-08-2019	SP	PSY	MSK	GNR

Revisions

REV	DESCRIPTION	DATE	DSGN	DRWN	CHKD	APPD
R0	ISSUED AS GOOD FOR CONSTRUCTION	16-08-2019	SP	PSY	MSK	GNR

Revisions

REV	DESCRIPTION	DATE	DSGN	DRWN	CHKD	APPD
R0	ISSUED AS GOOD FOR CONSTRUCTION	16-08-2019	SP	PSY	MSK	GNR

Revisions

REV	DESCRIPTION	DATE	DSGN	DRWN	CHKD	APPD
R0	ISSUED AS GOOD FOR CONSTRUCTION	16-08-2019	SP	PSY	MSK	GNR

Revisions

REV	DESCRIPTION	DATE	DSGN	DRWN	CHKD	APPD
R0	ISSUED AS GOOD FOR CONSTRUCTION	16-08-2019	SP	PSY	MSK	GNR

Revisions

REV	DESCRIPTION	DATE	DSGN	DRWN	CHKD	APPD
R0	ISSUED AS GOOD FOR CONSTRUCTION	16-08-2019	SP	PSY	MSK	GNR

Revisions

REV	DESCRIPTION	DATE	DSGN	DRWN	CHKD	APPD
R0	ISSUED AS GOOD FOR CONSTRUCTION	16-08-2019	SP	PSY	MSK	GNR

Revisions

REV	DESCRIPTION	DATE	DSGN	DRWN	CHKD	APPD
R0	ISSUED AS GOOD FOR CONSTRUCTION	16-08-2019	SP	PSY	MSK	GNR

Revisions

REV	DESCRIPTION	DATE	DSGN	DRWN	CHKD	APPD
R0	ISSUED AS GOOD FOR CONSTRUCTION	16-08-2019	SP	PSY	MSK	GNR

Revisions

REV	DESCRIPTION	DATE	DSGN	DRWN	CHKD	APPD
R0	ISSUED AS GOOD FOR CONSTRUCTION	16-08-2019	SP	PSY	MSK	GNR

Revisions

REV	DESCRIPTION	DATE	DSGN	DRWN	CHKD	APPD
R0	ISSUED AS GOOD FOR CONSTRUCTION	16-08-2019	SP	PSY	MSK	GNR

Revisions

REV	DESCRIPTION	DATE	DSGN	DRWN	CHKD	APPD
R0	ISSUED AS GOOD FOR CONSTRUCTION	16-08-2019	SP	PSY	MSK	GNR

Revisions

REV	DESCRIPTION	DATE	DSGN	DRWN	CHKD	APPD
R0	ISSUED AS GOOD FOR CONSTRUCTION	16-08-2019	SP	PSY	MSK	GNR

Revisions

REV	DESCRIPTION	DATE	DSGN	DRWN	CHKD	APPD
R0	ISSUED AS GOOD FOR CONSTRUCTION	16-08-2019	SP	PSY	MSK	GNR

Revisions

REV	DESCRIPTION	DATE	DSGN	DRWN	CHKD	APPD
R0	ISSUED AS GOOD FOR CONSTRUCTION	16-08-2019	SP	PSY	MSK	GNR

Revisions

REV	DESCRIPTION	DATE	DSGN	DRWN	CHKD	APPD
R0	ISSUED AS GOOD FOR CONSTRUCTION	16-08-2019	SP	PSY	MSK	GNR

Revisions

REV	DESCRIPTION	DATE	DSGN	DRWN	CHKD	APPD
R0	ISSUED AS GOOD FOR CONSTRUCTION	16-08-2019	SP	PSY	MSK	GNR

Revisions

REV	DESCRIPTION	DATE	DSGN	DRWN	CHKD	APPD
R0	ISSUED AS GOOD FOR CONSTRUCTION	16-08-2019	SP	PSY	MSK	GNR

Revisions

REV	DESCRIPTION	DATE	DSGN	DRWN	CHKD	APPD
R0	ISSUED AS GOOD FOR CONSTRUCTION	16-08-2019	SP	PSY	MSK	GNR

Revisions

REV	DESCRIPTION	DATE	DSGN	DRWN	CHKD	APPD
R0	ISSUED AS GOOD FOR CONSTRUCTION	16-08-2019	SP	PSY	MSK	GNR

Revisions

REV	DESCRIPTION	DATE	DSGN	DRWN	CHKD	APPD
R0	ISSUED AS GOOD FOR CONSTRUCTION	16-08-2019	SP	PSY	MSK	GNR

Revisions

REV	DESCRIPTION	DATE	DSGN	DRWN	CHKD	APPD
R0	ISSUED AS GOOD FOR CONSTRUCTION	16-08-2019	SP	PSY	MSK	GNR

Revisions

REV	DESCRIPTION	DATE	DSGN	DRWN	CHKD	APPD
R0	ISSUED AS GOOD FOR CONSTRUCTION	16-08-2019	SP	PSY	MSK	GNR

Revisions

REV	DESCRIPTION	DATE	DSGN	DRWN	CHKD	APPD
R0	ISSUED AS GOOD FOR CONSTRUCTION	16-08-2019	SP	PSY	MSK	GNR

Revisions

REV	DESCRIPTION	DATE	DSGN	DRWN	CHKD	APPD
R0	ISSUED AS GOOD FOR CONSTRUCTION	16-08-2019	SP	PSY	MSK	GNR

Revisions

REV	DESCRIPTION	DATE	DSGN	DRWN	CHKD	APPD
R0	ISSUED AS GOOD FOR CONSTRUCTION	16-08-2019	SP	PSY	MSK	GNR

Revisions

REV	DESCRIPTION	DATE	DSGN	DRWN	CHKD	APPD
R0	ISSUED AS GOOD FOR CONSTRUCTION	16-08-2019	SP	PSY	MSK	GNR

Revisions

REV	DESCRIPTION	DATE	DSGN	DRWN	CHKD	APPD
R0	ISSUED AS GOOD FOR CONSTRUCTION	16-08-2019	SP	PSY	MSK	GNR

Revisions

REV	DESCRIPTION	DATE	DSGN	DRWN	CHKD	APPD
R0	ISSUED AS GOOD FOR CONSTRUCTION	16-08-2019	SP	PSY	MSK	GNR

Revisions

REV	DESCRIPTION	DATE	DSGN	DRWN	CHKD	APPD
R0	ISSUED AS GOOD FOR CONSTRUCTION	16-08-2019	SP	PSY	MSK	GNR

Revisions

REV	DESCRIPTION	DATE	DSGN	DRWN	CHKD	APPD
R0	ISSUED AS GOOD FOR CONSTRUCTION	16-08-2019	SP	PSY	MSK	GNR

Revisions

REV	DESCRIPTION	DATE	DSGN	DRWN	CHKD	APPD
R0	ISSUED AS GOOD FOR CONSTRUCTION	16-08-2019	SP	PSY	MSK	GNR

Revisions

REV	DESCRIPTION	DATE	DSGN	DRWN	CHKD	APPD
R0	ISSUED AS GOOD FOR CONSTRUCTION	16-08-2019	SP	PSY	MSK	GNR

Revisions

REV	DESCRIPTION	DATE	DSGN	DRWN	CHKD	APPD
R0	ISSUED AS GOOD FOR CONSTRUCTION	16-08-2019	SP	PSY	MSK	GNR

Revisions

REV	DESCRIPTION	DATE	DSGN	DRWN	CHKD	APPD
R0	ISSUED AS GOOD FOR CONSTRUCTION	16-08-2019	SP	PSY	MSK	GNR

Revisions

REV	DESCRIPTION	DATE	DSGN	DRWN	CHKD	APPD
R0	ISSUED AS GOOD FOR CONSTRUCTION	16-08-2019	SP	PSY	MSK	GNR

Revisions

REV	DESCRIPTION	DATE	DSGN	DRWN	CHKD	APPD
R0	ISSUED AS GOOD FOR CONSTRUCTION	16-08-2019	SP	PSY	MSK	GNR

Revisions

REV	DESCRIPTION	DATE	DSGN	DRWN	CHKD	APPD
R0	ISSUED AS GOOD FOR CONSTRUCTION	16-08-2019	SP	PSY	MSK	GNR

Revisions

REV	DESCRIPTION	DATE	DSGN	DRWN	CHKD	APPD
R0	ISSUED AS GOOD FOR CONSTRUCTION	16-08-2019	SP	PSY	MSK	GNR

Revisions

REV	DESCRIPTION	DATE	DSGN	DRWN	CHKD	APPD
R0	ISSUED AS GOOD FOR CONSTRUCTION	16-08-2019	SP	PSY	MSK	GNR

Revisions

REV	DESCRIPTION	DATE	DSGN	DRWN	CHKD	APPD
R0	ISSUED AS GOOD FOR CONSTRUCTION	16-08-2019	SP	PSY	MSK	GNR

Revisions

REV	DESCRIPTION	DATE	DSGN	DRWN	CHKD	APPD
R0	ISSUED AS GOOD FOR CONSTRUCTION	16-08-2019	SP	PSY	MSK	GNR

Revisions

REV	DESCRIPTION	DATE	DSGN	DRWN	CHKD	APPD
R0	ISSUED AS GOOD FOR CONSTRUCTION	16-08-2019	SP	PSY	MSK	GNR

Revisions

REV	DESCRIPTION	DATE	DSGN	DRWN	CHKD	APPD
R0	ISSUED AS GOOD FOR CONSTRUCTION	16-08-2019	SP	PSY	MSK	GNR

Revisions

REV	DESCRIPTION	DATE	DSGN	DRWN	CHKD	APPD
R0	ISSUED AS GOOD FOR CONSTRUCTION	16-08-2019	SP	PSY	MSK	GNR

Revisions

REV	DESCRIPTION	DATE	DSGN	DRWN	CHKD	APPD
R0	ISSUED AS GOOD FOR CONSTRUCTION	16-08-2019	SP	PSY	MSK	GNR

Revisions

REV	DESCRIPTION	DATE	DSGN	DRWN	CHKD	APPD
R0	ISSUED AS GOOD FOR CONSTRUCTION	16-08-2019	SP	PSY	MSK	GNR

Revisions

REV	DESCRIPTION	DATE	DSGN	DRWN	CHKD	APPD
R0	ISSUED AS GOOD FOR CONSTRUCTION	16-08-2019	SP	PSY	MSK	GNR

Revisions

REV	DESCRIPTION	DATE	DSGN	DRWN	CHKD	APPD
R0	ISSUED AS GOOD FOR CONSTRUCTION	16-08-2019	SP	PSY	MSK	GNR

Revisions

REV	DESCRIPTION	DATE	DSGN	DRWN	CHKD	APPD
R0	ISSUED AS GOOD FOR CONSTRUCTION	16-08-2019	SP	PSY	MSK	GNR

Revisions

REV	DESCRIPTION	DATE	DSGN	DRWN	CHKD	APPD
R0	ISSUED AS GOOD FOR CONSTRUCTION	16-08-2019	SP	PSY	MSK	GNR

Revisions

REV	DESCRIPTION	DATE	DSGN	DRWN	CHKD	APPD
R0	ISSUED AS GOOD FOR CONSTRUCTION	16-08-2019	SP	PSY	MSK	GNR

Revisions

REV	DESCRIPTION	DATE	DSGN	DRWN	CHKD	APPD
R0	ISSUED AS GOOD FOR CONSTRUCTION	16-08-2019	SP	PSY	MSK	GNR

Revisions

REV	DESCRIPTION	DATE	DSGN	DRWN	CHKD	APPD
R0	ISSUED AS GOOD FOR CONSTRUCTION	16-08-2019	SP	PSY	MSK	GNR

Revisions

REV	DESCRIPTION	DATE	DSGN	DRWN	CHKD	APPD
R0	ISSUED AS GOOD FOR CONSTRUCTION	16-08-2019	SP	PSY	MSK	GNR

Revisions

REV	DESCRIPTION	DATE	DSGN	DRWN	CHKD	APPD
R0	ISSUED AS GOOD FOR CONSTRUCTION	16-08-2019	SP	PSY	MSK	GNR

Revisions

REV	DESCRIPTION	DATE	DSGN	DRWN	CHKD	APPD
R0	ISSUED AS GOOD FOR CONSTRUCTION	16-08-2019	SP	PSY	MSK	GNR

Revisions

REV	DESCRIPTION	DATE	DSGN	DRWN	CHKD	APPD
R0	ISSUED AS GOOD FOR CONSTRUCTION	16-08-2019	SP	PSY	MSK	GNR

Revisions

REV	DESCRIPTION	DATE	DSGN	DRWN	CHKD	APPD
R0	ISSUED AS GOOD FOR CONSTRUCTION	16-08-2019	SP	PSY	MSK	GNR

Revisions

REV	DESCRIPTION	DATE	DSGN	DRWN	CHKD	APPD
R0	ISSUED AS GOOD FOR CONSTRUCTION	16-08-2019	SP	PSY	MSK	GNR

Revisions

REV	DESCRIPTION	DATE	DSGN	DRWN	CHKD	APPD
R0	ISSUED AS GOOD FOR CONSTRUCTION	16-08-2019	SP	PSY	MSK	GNR

Revisions

REV	DESCRIPTION	DATE	DSGN	DRWN	CHKD	APPD
R0	ISSUED AS GOOD FOR CONSTRUCTION	16-08-2019	SP	PSY	MSK	GNR

Revisions

REV	DESCRIPTION	DATE	DSGN	DRWN	CHKD	APPD
R0	ISSUED AS GOOD FOR CONSTRUCTION	16-08-2019	SP	PSY	MSK	GNR

Revisions

REV	DESCRIPTION	DATE	DSGN	DRWN	CHKD	APPD
R0	ISSUED AS GOOD FOR CONSTRUCTION	16-08-2019	SP	PSY	MSK	GNR

Revisions

REV	DESCRIPTION	DATE	DSGN	DRWN	CHKD	APPD
R0	ISSUED AS GOOD FOR CONSTRUCTION	16-08-2019	SP	PSY	MSK	GNR

Revisions

REV	DESCRIPTION	DATE	DSGN	DRWN	CHKD	APPD
R0	ISSUED AS GOOD FOR CONSTRUCTION	16-08-2019	SP	PSY	MSK	GNR

Revisions

REV	DESCRIPTION	DATE	DSGN	DRWN	CHKD	APPD
R0	ISSUED AS GOOD FOR CONSTRUCTION	16-08-2019	SP	PSY	MSK	GNR

Revisions

REV	DESCRIPTION	DATE	DSGN	DRWN	CHKD	APPD
R0	ISSUED AS GOOD FOR CONSTRUCTION	16-08-2019	SP	PSY	MSK	GNR

Revisions

REV	DESCRIPTION	DATE	DSGN	DRWN	CHKD	APPD
R0	ISSUED AS GOOD FOR CONSTRUCTION	16-08-2019	SP	PSY	MSK	GNR

Revisions

REV	DESCRIPTION	DATE	DSGN	DRWN	CHKD	APPD
R0	ISSUED AS GOOD FOR CONSTRUCTION	16-08-2019	SP	PSY	MSK	GNR

Revisions

REV	DESCRIPTION	DATE	DSGN	DRWN	CHKD	APPD
R0	ISSUED AS GOOD FOR CONSTRUCTION	16-08-2019	SP	PSY	MSK	GNR

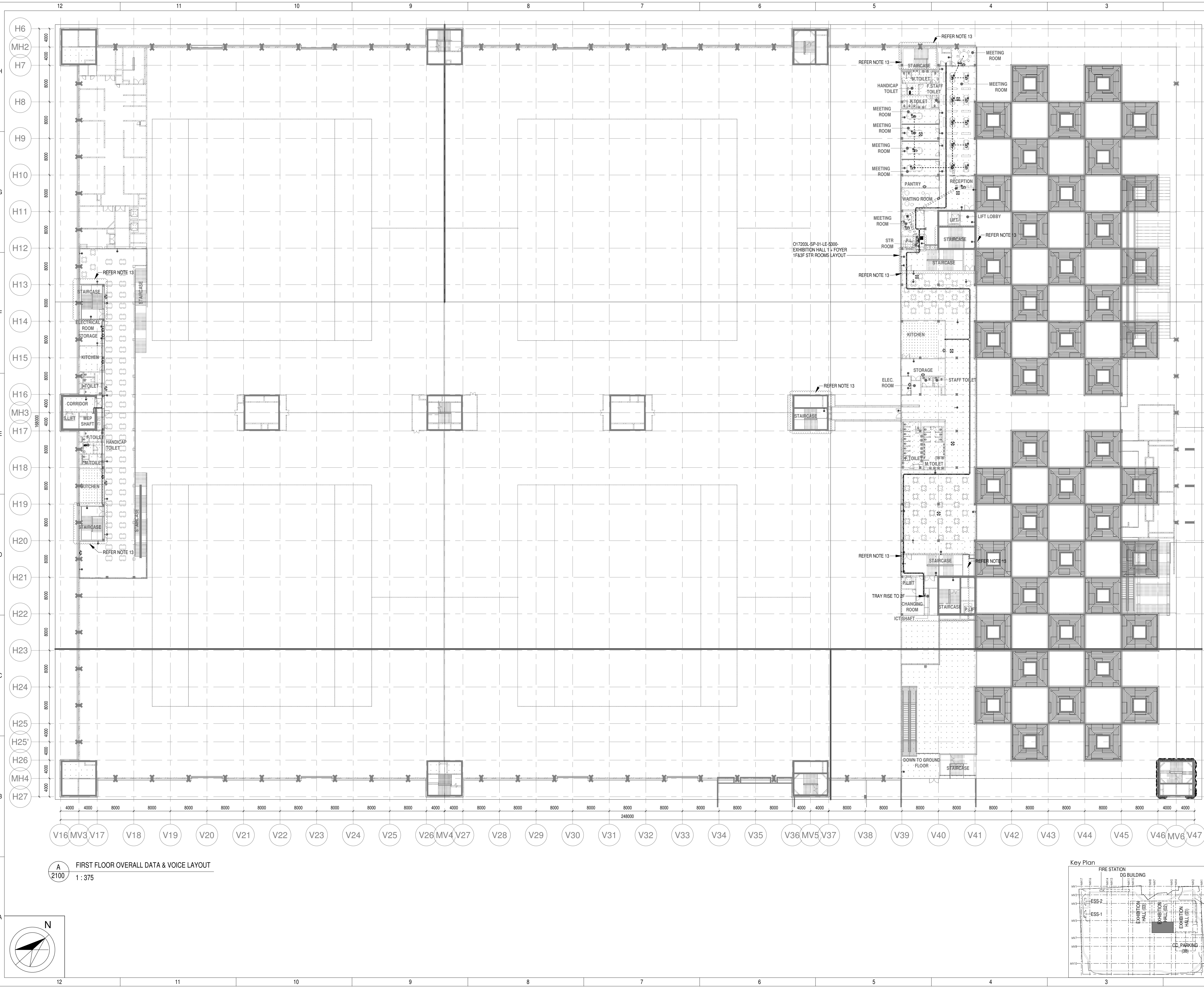
Revisions

REV	DESCRIPTION	DATE	DSGN	DRWN	CHKD	APPD
R0	ISSUED AS GOOD FOR CONSTRUCTION	16-08-2019	SP	PSY	MSK	GNR

Revisions

REV

O17203 - L - SP - 01 - DV - 2100 EXHIBITION HALL 1+FOYER-1 FIRST FLOOR OVERALL DATA & VOICE LAYOUT



Owner / Employer

India International Convention & Exhibition Centre Limited
Room No. 452A, Ministry of Commerce & Industry,
DIP, Udyog Bhawan, New Delhi - 110011, India

Department of Industrial Policy and Promotion Ministry of Commerce & Industry Government of India

Knowledge Partner

Delhi Mumbai Industrial Corridor Development Corporation
Room No. 341 & 3rd Floor Hotel Ashok, Diplomatic Enclave, 508 Chanakya Park, New Delhi - 110021

Employer's Representative

Employer's Engineer
Programme Management Consultant (PMC)

AECOM

Preliminary Engineering Architecture Consultants (PEAC)

idom
Av. Del Monasterio de El Escorial, 4,
28049 Madrid, Spain

CPKUREJA ARCHITECTS
No.D-1, Ashirwad Building, Green Park,
New Delhi, Delhi 110016, India

EPC Contractor

L&T Construction
Buildings & Factories
Mount Poonamallee Road, Manapakkam,
P.O.No.779, Chennai - 600 089

EPC Contractor's Representatives

Design Consultant
Engineering Design and Research Center (EDRC)
L&T Construction - Buildings & Factories

Architectural Consultant
ARCOP Arcop Associates Pvt. Ltd.
A-15, Pamposh Enclave, G.K-1
New Delhi, Delhi 110048, India

Structural Proof Consultant
Indian Institute of Technology (IIT) Madras
Sardar Patel Rd. Opposite to C. L.R.I. Adyar, Chennai,
Tamil Nadu 600036

MEP Proof Consultant
egis Egis India Consulting Engineers Pvt. Ltd.
Plot No. 66, Sector 32, Institutional Area,
Opp. Zenith Solutions, Gurgaon,
Haryana 122001

ICT Proof Consultant
CCR CCR Consulting Engineers Pvt. Ltd.
#47/1, 3rd Floor, Narayana Arcade,
Subbaramachetty Road, Melkote Circle,
Basavanagudi, Bengaluru - 560004

Certification

EPC Contractor					
Design Consultant					
Architectural Consultant					
Proof Consultant					
Structural	MEP	ICT			
PEAC					
Issued by: Employer / Employer's Engineer					

R0	ISSUED AS GOOD FOR CONSTRUCTION	16-08-2019	SP	PSY	MSK	GMR
REV	DESCRIPTION	DATE	DSGN	DRWN	CHKD	APPD

Revisions

ARCHITECTURE			FPS			
STRUCTURAL			PIPING			
ELECTRICAL			PHE			
ELV SYSTEM			GIS			
HVAC			GEOTECH.			
CHECKED BY	SIGN	DATE	CHECKED BY	SIGN	DATE	

EPC Contractor

L&T Construction
Buildings & Factories

JOB No : O17203

Project Name
DESIGN AND CONSTRUCTION OF INDIA
INTERNATIONAL CONVENTION & EXPO CENTRE
SECTOR 25, DWARKA, NEW DELHI, INDIA

Drawing Status
GOOD FOR CONSTRUCTION (GFC)

Drawing No
L 01 2100 R0

Rev. No

Title :

EXHIBITION HALL-01
EXHIBITION HALL 1+FOYER-1 FIRST FLOOR
OVERALL DATA & VOICE LAYOUT

EDRC DWG No :
O17203 - L - SP - 01 - DV - 2100

Scale
1 : 375

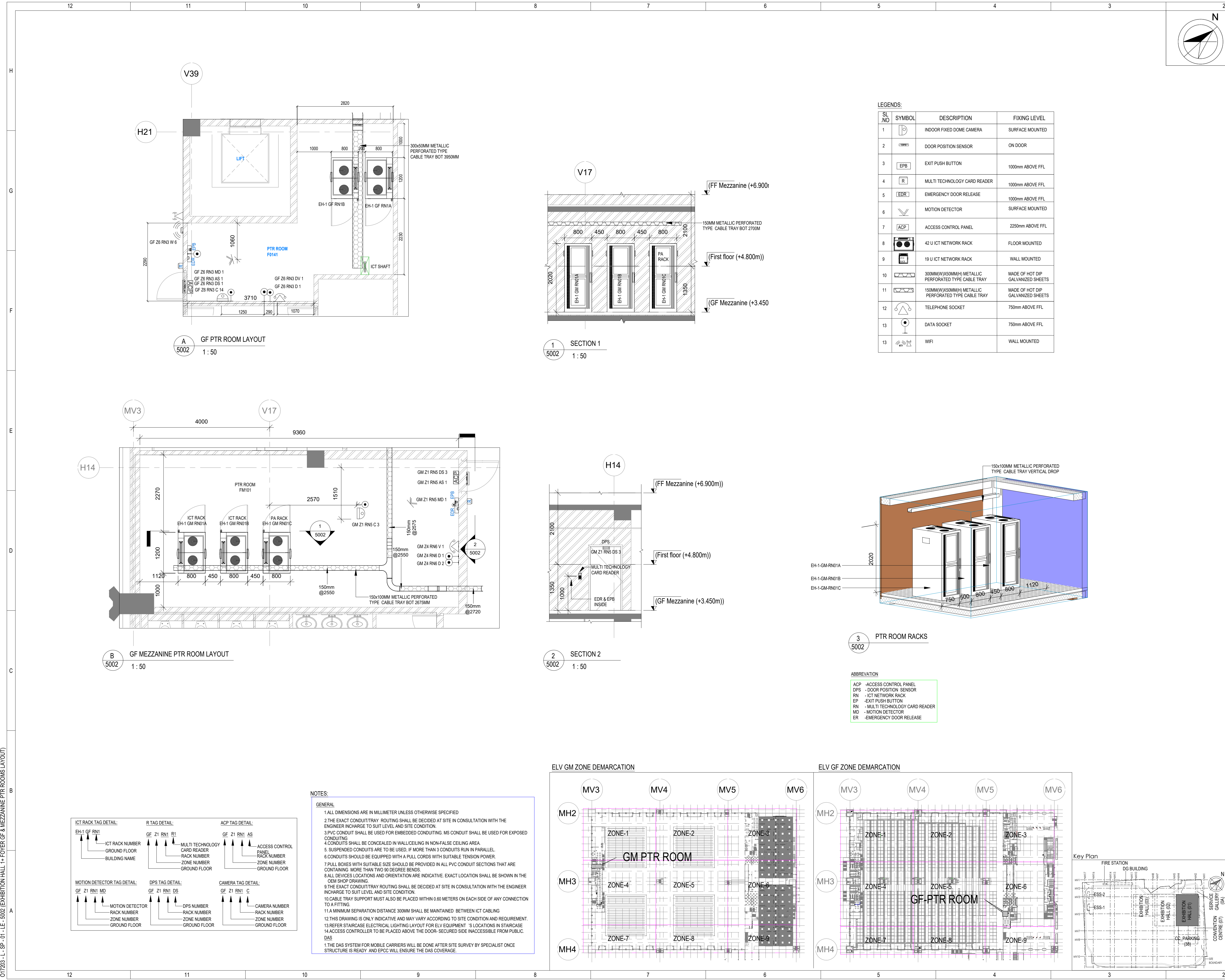
Sheet Size
A1

Key Plan

FIRE STATION
DG BUILDING
EXHIBITION HALL (01)
EXHIBITION HALL (02)
EXHIBITION HALL (03)
EXHIBITION HALL (04)
EXHIBITION HALL (05)
EXHIBITION HALL (06)
EXHIBITION HALL (07)
EXHIBITION HALL (08)
EXHIBITION HALL (09)
EXHIBITION HALL (10)
EXHIBITION HALL (11)
EXHIBITION HALL (12)
EXHIBITION HALL (13)
EXHIBITION HALL (14)
EXHIBITION HALL (15)
EXHIBITION HALL (16)
EXHIBITION HALL (17)
EXHIBITION HALL (18)
EXHIBITION HALL (19)
EXHIBITION HALL (20)
EXHIBITION HALL (21)
EXHIBITION HALL (22)
EXHIBITION HALL (23)
EXHIBITION HALL (24)
EXHIBITION HALL (25)
EXHIBITION HALL (26)
EXHIBITION HALL (27)
EXHIBITION HALL (28)
EXHIBITION HALL (29)
EXHIBITION HALL (30)
EXHIBITION HALL (31)
EXHIBITION HALL (32)
EXHIBITION HALL (33)
EXHIBITION HALL (34)
EXHIBITION HALL (35)
EXHIBITION HALL (36)
EXHIBITION HALL (37)
EXHIBITION HALL (38)
EXHIBITION HALL (39)
EXHIBITION HALL (40)
EXHIBITION HALL (41)
EXHIBITION HALL (42)
EXHIBITION HALL (43)
EXHIBITION HALL (44)
EXHIBITION HALL (45)
EXHIBITION HALL (46)
EXHIBITION HALL (47)
EXHIBITION HALL (48)
EXHIBITION HALL (49)
EXHIBITION HALL (50)
EXHIBITION HALL (51)
EXHIBITION HALL (52)
EXHIBITION HALL (53)
EXHIBITION HALL (54)
EXHIBITION HALL (55)
EXHIBITION HALL (56)
EXHIBITION HALL (57)
EXHIBITION HALL (58)
EXHIBITION HALL (59)
EXHIBITION HALL (60)
EXHIBITION HALL (61)
EXHIBITION HALL (62)
EXHIBITION HALL (63)
EXHIBITION HALL (64)
EXHIBITION HALL (65)
EXHIBITION HALL (66)
EXHIBITION HALL (67)
EXHIBITION HALL (68)
EXHIBITION HALL (69)
EXHIBITION HALL (70)
EXHIBITION HALL (71)
EXHIBITION HALL (72)
EXHIBITION HALL (73)
EXHIBITION HALL (74)
EXHIBITION HALL (75)
EXHIBITION HALL (76)
EXHIBITION HALL (77)
EXHIBITION HALL (78)
EXHIBITION HALL (79)
EXHIBITION HALL (80)
EXHIBITION HALL (81)
EXHIBITION HALL (82)
EXHIBITION HALL (83)
EXHIBITION HALL (84)
EXHIBITION HALL (85)
EXHIBITION HALL (86)
EXHIBITION HALL (87)
EXHIBITION HALL (88)
EXHIBITION HALL (89)
EXHIBITION HALL (90)
EXHIBITION HALL (91)
EXHIBITION HALL (92)
EXHIBITION HALL (93)
EXHIBITION HALL (94)
EXHIBITION HALL (95)
EXHIBITION HALL (96)
EXHIBITION HALL (97)
EXHIBITION HALL (98)
EXHIBITION HALL (99)
EXHIBITION HALL (100)

This drawing is the property of L&T Construction. B&F-EDRC and must not be passed on to any person or body nor be copied or otherwise made use either in full or in part by such person or body without our prior permission in writing.

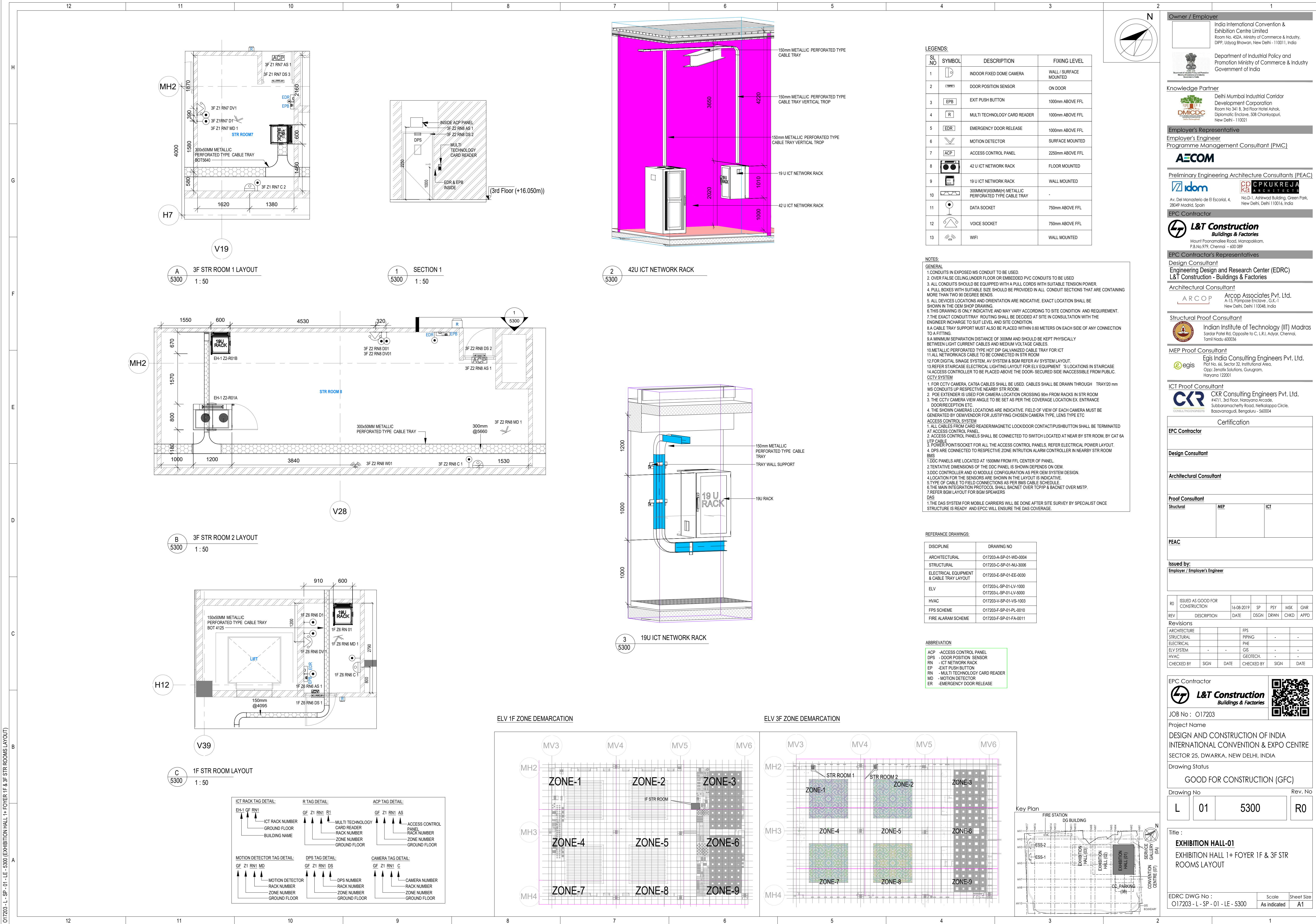
O17203 - L - SP - 01 - LE - 5002 EXHIBITION HALL 1+ FOYER GF & MEZZANINE PTR ROOMS LAYOUT



Owner / Employer			
India International Convention & Exhibition Centre Limited Room No. 452A, Ministry of Commerce & Industry, DPP, Udyog Bhawan, New Delhi - 110011, India			
Department of Industrial Policy and Promotion Ministry of Commerce & Industry Government of India			
Knowledge Partner			
Delhi Mumbai Industrial Corridor Development Corporation Room No 341 B, 3rd Floor Hotel Ashok, Diplomatic Enclave, 508 Chanakyapuri, New Delhi - 110021			
Employer's Representative			
Employer's Engineer Programme Management Consultant (PMC)			
AECOM			
Preliminary Engineering Architecture Consultants (PEAC)			
Av. Del Monasterio de El Escorial, 4, 28049 Madrid, Spain			
No.D-1, Ashwini Building, Green Park, New Delhi, Delhi 110016, India			
EPC Contractor			
L&T Construction Buildings & Factories Mount Poonamallee Road, Manappakkam, P.B.No.979, Chennai - 600 089			
EPC Contractor's Representatives			
Design Consultant			
Engineering Design and Research Center (EDRC) L&T Construction - Buildings & Factories			
Architectural Consultant			
ARCOP Arcop Associates Pvt. Ltd. A-15, Pampose Enclave, G.K.-1 New Delhi, Delhi 110048, India			
Structural Proof Consultant			
Indian Institute of Technology (IIT) Madras Sardar Patel Rd, Opposite to C. L.R.I. Adyar, Chennai, Tamil Nadu 600036			
MEP Proof Consultant			
Egis India Consulting Engineers Pvt. Ltd. Plot No. 66, Sector 32, Institutional Area, Opp: Zenith Solutions, Gurugram, Haryana 122001			
ICT Proof Consultant			
CKR Consulting Engineers Pvt. Ltd. #47/1, 3rd Floor, Narayana Arcade, Subaramachetty Road, Nellikoppa Circle, Basavanagudi, Bengaluru - 560004			
Certification			
EPC Contractor			
Design Consultant			
Architectural Consultant			
Proof Consultant			
Structural	MEP	ICT	
PEAC			
Issued by: Employer / Employer's Engineer			
R0			
ISSUED AS GOOD FOR CONSTRUCTION			
REV	DESCRIPTION	DATE	DSGN
SP	PSY	MSK	GNR
CHKD	APPD		
Revisions			
ARCHITECTURE		FPS	
STRUCTURAL		PPING	-
ELECTRICAL		PHE	-
ELV SYSTEM	-	GIS	-
HVAC		GEOTECH.	-
CHECKED BY	SIGN	DATE	CHECKED BY
SIGN	DATE	SIGN	DATE
EPC Contractor			
L&T Construction Buildings & Factories			
JOB No: O17203			
Project Name			
DESIGN AND CONSTRUCTION OF INDIA INTERNATIONAL CONVENTION & EXPO CENTRE SECTOR 25, DWARKA, NEW DELHI, INDIA			
Drawing Status			
GOOD FOR CONSTRUCTION (GFC)			
Drawing No			
L	01	5002	R0
Rev. No			
Title :			
EXHIBITION HALL-01 EXHIBITION HALL 1+ FOYER GF & MEZZANINE PTR ROOMS LAYOUT			
EDRC DWG No :			
O17203 - L - SP - 01 - LE - 5002			
Scale			
As indicated			
Sheet Size			
A1			

This drawing is the property of L&T Construction. B&F-EDRC and must not be passed on to any person or body not authorised by us to receive it nor be copied or otherwise made use either in full or in part by such person or body without our prior permission in writing.

O17203-L-SP-01-LE-5300 (EXHIBITION HALL 1+ FOYER 1F & 3F STR ROOMS LAYOUT)



Owner / Employer

India International Convention & Exhibition Centre Limited
Room No. 452A, Ministry of Commerce & Industry,
DPP, Jyoti Bhawan, New Delhi - 110011, India

Department of Industrial Policy and Promotion
Ministry of Commerce & Industry
Government of India

Knowledge Partner

Delhi Mumbai Industrial Corridor Development Corporation
Room No 341 & 3rd Floor Hotel Ashok,
Diplomatic Enclave, 508 Chankyapuri,
New Delhi - 110021

Employer's Representative

Employer's Engineer
Programme Management Consultant (PMC)

AECOM

Preliminary Engineering Architecture Consultants (PEAC)

Av. Del Monasterio de B Escorial, 4,
28049 Madrid, Spain

No D-1, Ashwini Building, Green Park,
New Delhi, Delhi 110016, India

EPC Contractor

L&T Construction
Buildings & Factories

Mount Poonamallee Road, Manapakkam,
P.O.No.779, Chennai - 600 089

EPC Contractor's Representatives

Design Consultant
Engineering Design and Research Center (EDRC)
L&T Construction - Buildings & Factories

Architectural Consultant

ARCOP
Arcop Associates Pvt. Ltd.
A-13, Pampose Enclave, G.K-1
New Delhi, Delhi 110048, India

Structural Proof Consultant

Indian Institute of Technology (IIT) Madras
Sardar Patel Rd. Opposite to C. L.R.I. Adyar, Chennai,
Tamil Nadu 600036

MEP Proof Consultant

Egis India Consulting Engineers Pvt. Ltd.
Plot No. 46, Sector 32, Institutional Area,
Opp. Zenith Solutions, Gurugram,
Haryana 122001

ICT Proof Consultant

CKR Consulting Engineers Pvt. Ltd.
#47/1, 3rd Floor, Narayana Arcade,
Subbaramachetty Road, Nerul/Kalpapp Circle,
Basantnagar, Bengaluru - 560004

Certification

EPC Contractor

Design Consultant

Architectural Consultant

Proof Consultant

Structural

MEP

ICT

PEAC

Issued by:

Employer / Employer's Engineer

RO

ISSUED AS GOOD FOR CONSTRUCTION

REV

Revisions

ARCHITECTURE

STRUCTURAL

ELECTRICAL

ELV SYSTEM

HVAC

CHECKED BY

SIGN

DATE

CHECKED BY

SIGN

DATE

EPC Contractor

L&T Construction

Buildings & Factories

JOB No : O17203

Project Name

DESIGN AND CONSTRUCTION OF INDIA

INTERNATIONAL CONVENTION & EXPO CENTRE

SECTOR 25, DWARKA, NEW DELHI, INDIA

Drawing Status

GOOD FOR CONSTRUCTION (GFC)

Drawing No

L 01 5300 R0

Rev. No

Title :

EXHIBITION HALL-01

EXHIBITION HALL 1+ FOYER 1F & 3F STR

ROOMS LAYOUT

EDRC DWG NO :

O17203 - L - SP - 01 - LE - 5300

Scale

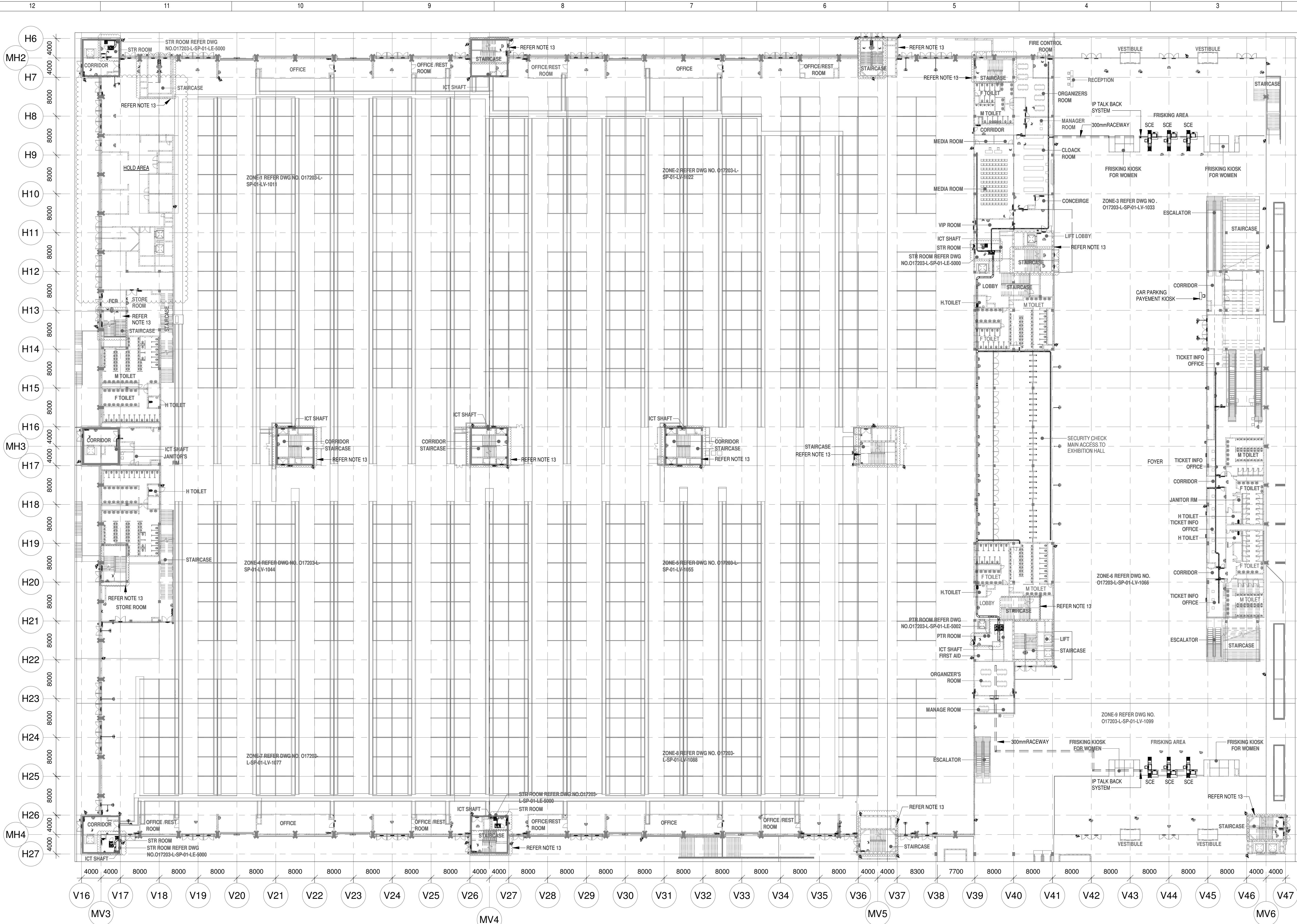
As indicated

Sheet Size

A1

This drawing is the property of L&T Construction. B&F-EDRC and must not be passed on to any person or body not authorized by us to receive it nor be copied or otherwise made use without our prior permission in writing.

O17203 - L - SP - 01 - LV - 1000 (Exhibition Hall 1 + Foyer GF Over All ELV System Layout)



GROUND FLOOR ELV SYSTEM LAYOUT OVERALL PLAN
1 : 400

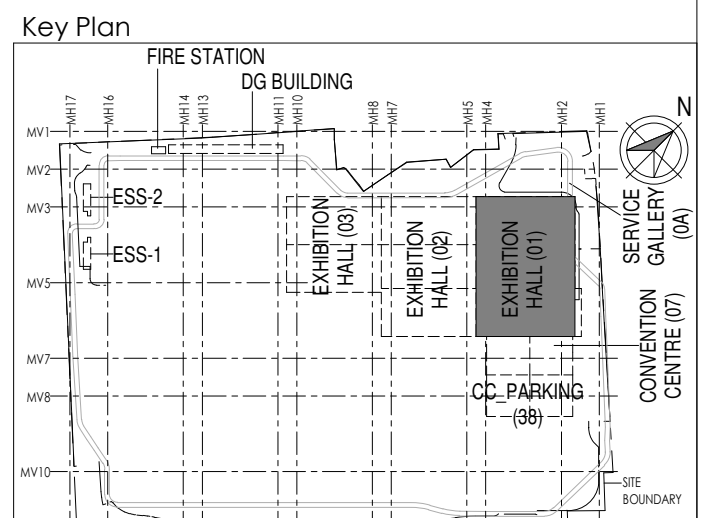
NOTES:


GENERAL


- CONDUITS IN EXPOSED MS CONDUIT TO BE USED.
- OVER FALSE CEILING UNDER FLOOR OR EMBEDDED PVC CONDUITS TO BE USED
- ALL CONDUITS SHOULD BE EQUIPPED WITH A PULL CORDS WITH SUITABLE TENSION POWER
- PULL BOXES WITH SUITABLE SIZE SHOULD BE PROVIDED IN ALL CONDUIT SECTIONS THAT ARE CONTAINING MORE THAN TWO 90 DEGREE BENDS.
- ALL DEVICES LOCATIONS AND ORIENTATION ARE INDICATIVE. EXACT LOCATION SHALL BE SHOWN IN THE OEM SHOP DRAWING.
- THIS DRAWING IS ONLY INDICATIVE AND MAY VARY ACCORDING TO SITE CONDITION AND REQUIREMENT.
- THE EXACT CONDUIT/TRAY ROUTING SHALL BE DECIDED AT SITE IN CONSULTATION WITH THE ENGINEER INCHARGE TO SUIT LEVEL AND SITE CONDITION.
- A CABLE TRAY SUPPORT MUST ALSO BE PLACED WITHIN 0.60 METERS ON EACH SIDE OF ANY CONNECTION TO A FITTING.
- A MINIMUM SEPARATION DISTANCE OF 300MM AND SHOULD BE KEPT PHYSICALLY BETWEEN LIGHT CURRENT CABLES AND MEDIUM VOLTAGE CABLES.
- METALLIC PERFORATED TYPE HOT DIP GALVANIZED CABLE TRAY FOR ICT
- ALL NETWORKING CABLES TO BE CONNECTED IN STR ROOM
- FOR DIGITAL SIGNAGE SYSTEM, AV SYSTEM & BGM REFER AV SYSTEM LAYOUT.
- REFER STAIRCASE ELECTRICAL LIGHTING LAYOUT FOR ELV EQUIPMENT'S LOCATIONS IN STAIRCASE (REFER DRAWING NO O17203-E-SP-01-LV-146 TO-150)
- ACCESS CONTROLLER TO BE PLACED ABOVE THE DOOR- SECURED SIDE INACCESSIBLE FROM PUBLIC



CCTV SYSTEM


- FOR CCTV CAMERA, CAT6A CABLES SHALL BE USED. CABLES SHALL BE DRAWN THROUGH TRAY 20 mm MS CONDUITS UP RESPECTIVE NEARBY STR ROOM.
 - POE EXTENDER IS USED FOR CAMERA LOCATION CROSSING 90m FROM RACKS IN STR ROOM
 - THE CCTV CAMERA VIEW ANGLE TO BE SET AS PER THE COVERAGE LOCATION EX. ENTRANCE DOOR/RECEPTION ETC.
 - THE SHOWN CAMERAS LOCATIONS ARE INDICATIVE. FIELD OF VIEW OF EACH CAMERA MUST BE GENERATED BY OEM/VENDOR FOR JUSTIFYING CHOSEN CAMERA TYPE, LENS TYPE ETC
- ACCESS CONTROL SYSTEM
- ALL CABLES FROM CARD READER/MAGNETIC LOCK/DOOR CONTACT/PUSHBUTTON SHALL BE TERMINATED AT ACCESS CONTROL PANEL.
 - ACCESS CONTROL PANELS SHALL BE CONNECTED TO SWITCH LOCATED AT NEAR BY STR ROOM, BY CAT 6A UTP CABLE.
 - POWER POINT/SOCKET FOR ALL THE ACCESS CONTROL PANELS, REFER ELECTRICAL POWER LAYOUT.
 - DPS ARE CONNECTED TO RESPECTIVE ZONE INTRUSION ALARM CONTROLLER IN NEARBY STR ROOM
- BMS
- DDC PANELS ARE LOCATED AT 1500MM FROM FFL CENTER OF PANEL.
 - TENTATIVE DIMENSIONS OF THE DDC PANEL IS SHOWN DEPENDS ON OEM.
 - DDC CONTROLLER AND IO MODULE CONFIGURATION AS PER OEM SYSTEM DESIGN.
 - LOCATION FOR THE SENSORS ARE SHOWN IN INDICATIVE.
 - TYPE OF CABLE TO FIELD CONNECTIONS AS PER BMS CABLE SCHEDULE.
 - THE MAIN INTEGRATION PROTOCOL SHALL BACKUP OVER TCP/IP & BACKUP OVER MSTP.
 - REFER BGM LAYOUT FOR BGM SPEAKERS
- DAS
- THE DAS SYSTEM FOR MOBILE CARRIERS WILL BE DONE AFTER SITE SURVEY BY SPECIALIST ONCE STRUCTURE IS READY AND EPC WILL ENSURE THE DAS COVERAGE.





Owner / Employer
India International Convention & Exhibition Centre Limited
Room No. 452A, Ministry of Commerce & Industry,
DIPF, Udyog Bhawan, New Delhi - 110011, India

Department of Industrial Policy and Promotion Ministry of Commerce & Industry
Government of India


Knowledge Partner

Delhi Mumbai Industrial Corridor Development Corporation
Room No. 341 B, 3rd Floor Hotel Anshok, Diplomatic Enclave, 508 Chankapuri, New Delhi - 110021


Employer's Representative
Employer's Engineer
Programme Management Consultant (PMC)
AECOM
Preliminary Engineering Architecture Consultants (PEAC)

Av. Del Monasterio de El Escorial, 4, 28049 Madrid, Spain

No.D-1, Ashwini Building, Green Park, New Delhi, Delhi 110016, India

EPC Contractor

L&T Construction
Buildings & Factories
Mount Poonamallee Road, Manapakkam, P.O.No.779, Chennai - 600 089

EPC Contractor's Representatives
Design Consultant
Engineering Design and Research Center (EDRC)
L&T Construction - Buildings & Factories
Architectural Consultant

Arcop Associates Pvt. Ltd.
A-15, Pamposh Enclave, G.K-1 New Delhi, Delhi 110048, India

Structural Proof Consultant

Indian Institute of Technology (IIT) Madras
Sardar Patel Rd, Opposite to C. L.R.J. Adyar, Chennai, Tamil Nadu 600036

MEP Proof Consultant

Egis India Consulting Engineers Pvt. Ltd.
Plot No. 66, Sector 32, Institutional Area, Opp. Zenith Solutions, Gurgaon, Haryana 122001


ICT Proof Consultant

CCR Consulting Engineers Pvt. Ltd.
#47/1, 3rd floor, Narayana Arcade, Subbaramachetty Road, Nelloreapada Circle, Basavanagudi, Bengaluru - 560004

Certification

REV	DESCRIPTION	DATE	DSGN	DRWN	CHKD	APPD
R0	ISSUED AS GOOD FOR CONSTRUCTION	16-08-2019	SP	PSY	MSK	GMR

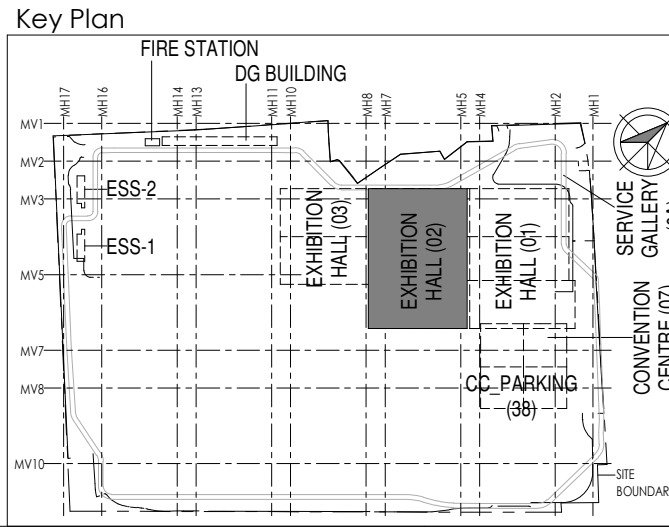
Revisions

REV	DESCRIPTION	DATE	DSGN	DRWN	CHKD	APPD
1	ARCHITECTURE					
2	STRUCTURAL					
3	ELECTRICAL					
4	ELV SYSTEM					
5	HVAC					

EPC Contractor

L&T Construction
Buildings & Factories
JOB No : O17203
Project Name
DESIGN AND CONSTRUCTION OF INDIA INTERNATIONAL CONVENTION & EXPO CENTRE SECTOR 25, DWARKA, NEW DELHI, INDIA
Drawing Status
GOOD FOR CONSTRUCTION (GFC)
Drawing No
L 01 1000
Rev. No
R0

Title :
EXHIBITION HALL-01
Exhibition Hall 1 + Foyer GF Over All ELV System Layout
EDRC DWG No :
O17203 - L - SP - 01 - LV - 1000
Scale
As indicated
Sheet Size
A1

This drawing is the property of L&T Construction. B&F-EDRC and must not be passed on to any person or body nor be copied or otherwise made use either in full or in part by such person or body without our prior permission in writing.



Employer's Representative
Employer's Engineer
Programme Management Consultant (PMC)

idom **CPKUKREJA ARCHITECTS**
 Av. Del Monasterio de El Escorial, 4, No.D-1, Ashirwad Building, Green Park,
 28049 Madrid, Spain New Delhi, Delhi 110016, India

Design Consultant
Engineering Design and Research Center (EDRC)
L&T Construction - Buildings & Factories

Structural Proof Consultant

 Indian Institute of Technology (IIT) Madras
Sardar Patel Rd, Opposite to C. L.R.J, Adyar, Chennai,
Tamil Nadu 600036

ICT Proof Consultant

CKR Consulting Engineers Pvt. Ltd.
#47/1, 3rd Floor, Narayana Arcade,
Subbaramachetty Road, Nelkappa Circle,
Basavanagudi, Bengaluru - 560004

<p style="text-align: center; margin: 0;">Certification</p>		
<p><u>EPC Contractor</u></p>		
<p><u>Design Consultant</u></p>		
<p><u>Architectural Consultant</u></p>		
<p><u>Proof Consultant</u></p>		
<p><u>Structural</u></p>	<p><u>MEP</u></p>	<p><u>ICI</u></p>
<p><u>PEAC</u></p>		
<p><u>Issued by:</u></p>		
<p><u>Employer / Employer's Engineer</u></p>		

RD	ISSUED AS GOOD FOR CONSTRUCTION	27-08-2019	SP	PSY	MSK	GNR
REV	DESCRIPTION	DATE	DSGN	DRWN	CHKD	APPD

ARCHITECTURE			FPS		
STRUCTURAL			PIPING	-	-
ELECTRICAL			PHE		
ELV SYSTEM	-	-	GIS	-	-
HVAC			GEOTECH.	-	-
CHECKED BY	SIGN	DATE	CHECKED BY	SIGN	DATE

EPC Contractor

 **L&T Construction**
Buildings & Factories

JOB No : Q17203

Project Name
DESIGN AND CONSTRUCTION OF INDIA
INTERNATIONAL CONVENTION & EXPO CENTRE
SECTOR 25, DWARKA, NEW DELHI, INDIA

Drawing Status

GOOD FOR CONSTRUCTION (GFC)

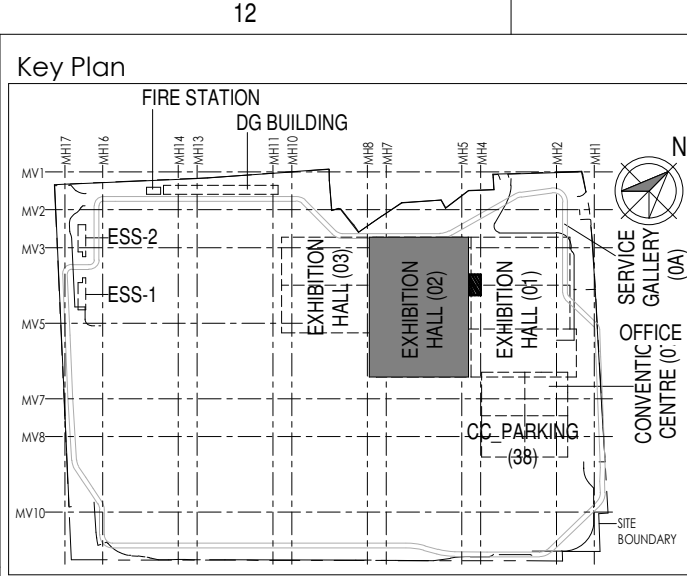
Drawing No			Rev. No
L	02	2100	R0

Title : **EXHIBITION HALL-02**
Exhibition Hall 2 + Foyer 1F Over All Data & Voice Layout

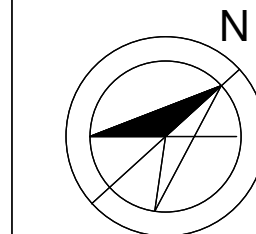
EDRC DWG No :	Scale	Sheet Size
O17203 - L - SP - 02 - DV - 2100	1 : 400	A1

NOTE: WIFI ACCESS POINTS ARE INDICATIVE,THE WAP SHALL BE PLACED BASED IN FINAL SITE SURVEY BY VENDOR

A **B** **C** **D**



MH4
H27
H28
H29
H30



Owner / Employer
India International Convention & Exhibition Centre Limited
Room No. 452A, Ministry of Commerce & Industry, DIPP, Udyog Bhawan, New Delhi - 110011, India

Department of Industrial Policy and Promotion Ministry of Commerce & Industry Government of India

Knowledge Partner

Delhi Mumbai Industrial Corridor Development Corporation
Room No. 341 & 3rd Floor Hotel Anahat, Diplomatic Enclave, 508 Chankapuri, New Delhi - 110021

Employer's Representative
Employer's Engineer
Programme Management Consultant (PMC)
AECOM

Preliminary Engineering Architecture Consultants (PEAC)

Av. Del Monasterio de El Escorial, 4, 28049 Madrid, Spain

No.D-1, Ashirwad Building, Green Park, New Delhi, Delhi 110016, India

EPC Contractor

L&T Construction
Buildings & Factories
Mount Poonamallee Road, Manapakkam, P.O.No.779, Chennai - 600 089

EPC Contractor's Representatives
Design Consultant
Engineering Design and Research Center (EDRC)
L&T Construction - Buildings & Factories

Architectural Consultant

Arcop Associates Pvt. Ltd.
A-15, Pamposh Enclave, G.K-1 New Delhi, Delhi 110048, India

Structural Proof Consultant

Indian Institute of Technology (IIT) Madras
Sardar Patel Rd. Opposite to C. L.R. Aiyar, Chennai, Tamil Nadu 600036

MEP Proof Consultant

Egis India Consulting Engineers Pvt. Ltd.
Plot No. 66, Sector 32, Institutional Area, Opp. Zenith Solutions, Gurgaon, Haryana 122001

ICT Proof Consultant

CCR Consulting Engineers Pvt. Ltd.
#47/1, 3rd Floor, Narayana Arcade, Subbaramachetty Road, Neelakappa Circle, Basavanagudi, Bengaluru - 560004

Certification			
EPC Contractor			
Design Consultant			
Architectural Consultant			
Proof Consultant			
Structural	MEP	ICT	
PEAC			
Issued by: Employer / Employer's Engineer			

R0	ISSUED AS GOOD FOR CONSTRUCTION	26-08-2019	SP	PSY	MSK	GMR
REV	DESCRIPTION	DATE	DSGN	DRWN	CHKD	APPD
Revisions						
ARCHITECTURE				FPS		
STRUCTURAL				PIPING		
ELECTRICAL				PHE		
ELV SYSTEM				GIS		
HVAC				GEOTECH.		
CHECKED BY	SIGN	DATE	CHECKED BY	SIGN	DATE	

EPC Contractor

L&T Construction
Buildings & Factories

JOB No : O17203

Project Name
DESIGN AND CONSTRUCTION OF INDIA INTERNATIONAL CONVENTION & EXPO CENTRE SECTOR 25, DWARKA, NEW DELHI, INDIA

Drawing Status
GOOD FOR CONSTRUCTION (GFC)

Drawing No
L 02 1000 R0

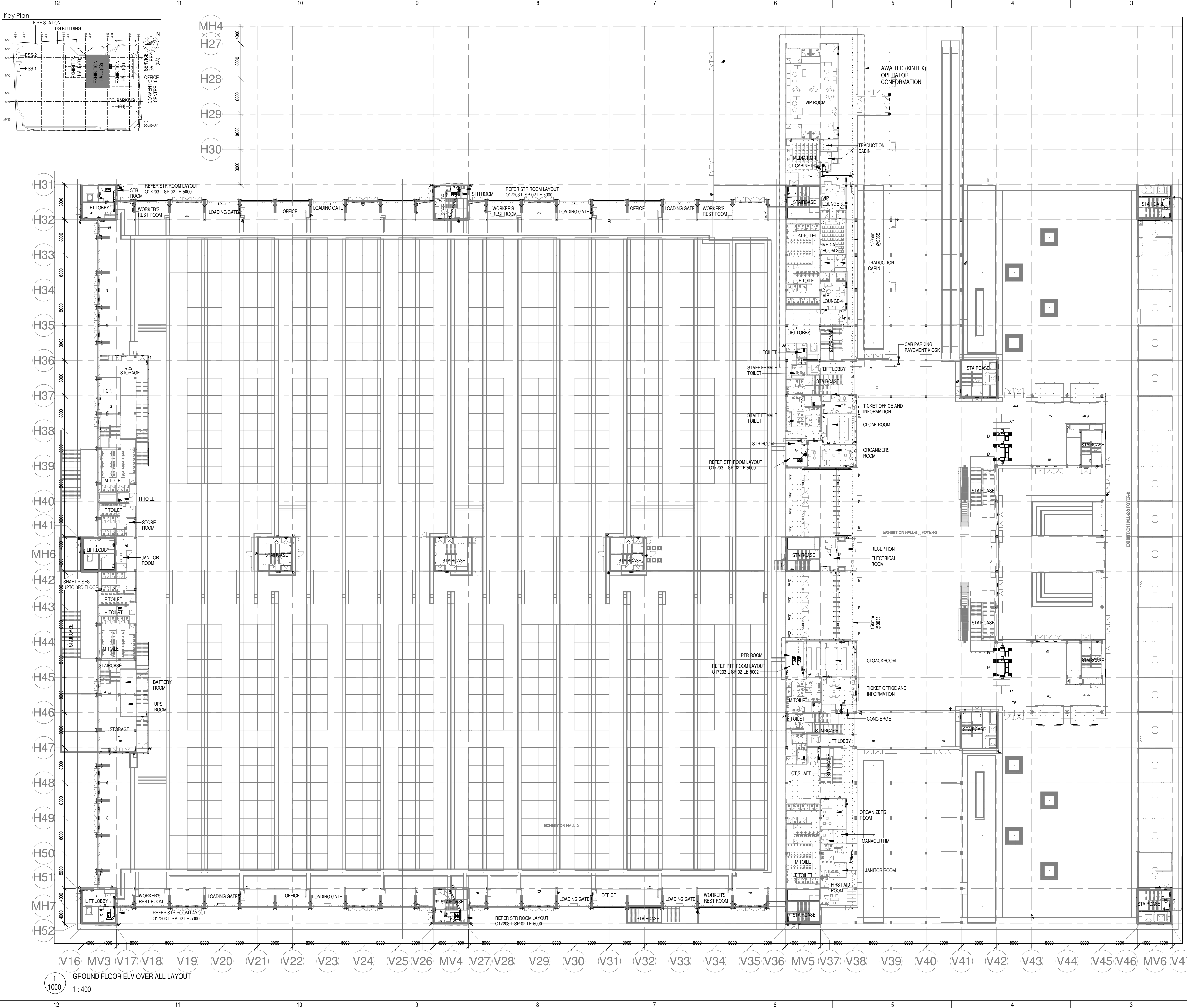
Rev. No

Title :
EXHIBITION HALL-02
Exhibition Hall 2 + Foyer GF Over All ELV System Layout

EDRC DWG No :
O17203 - L - SP - 02 - LV - 1000

Scale
As indicated

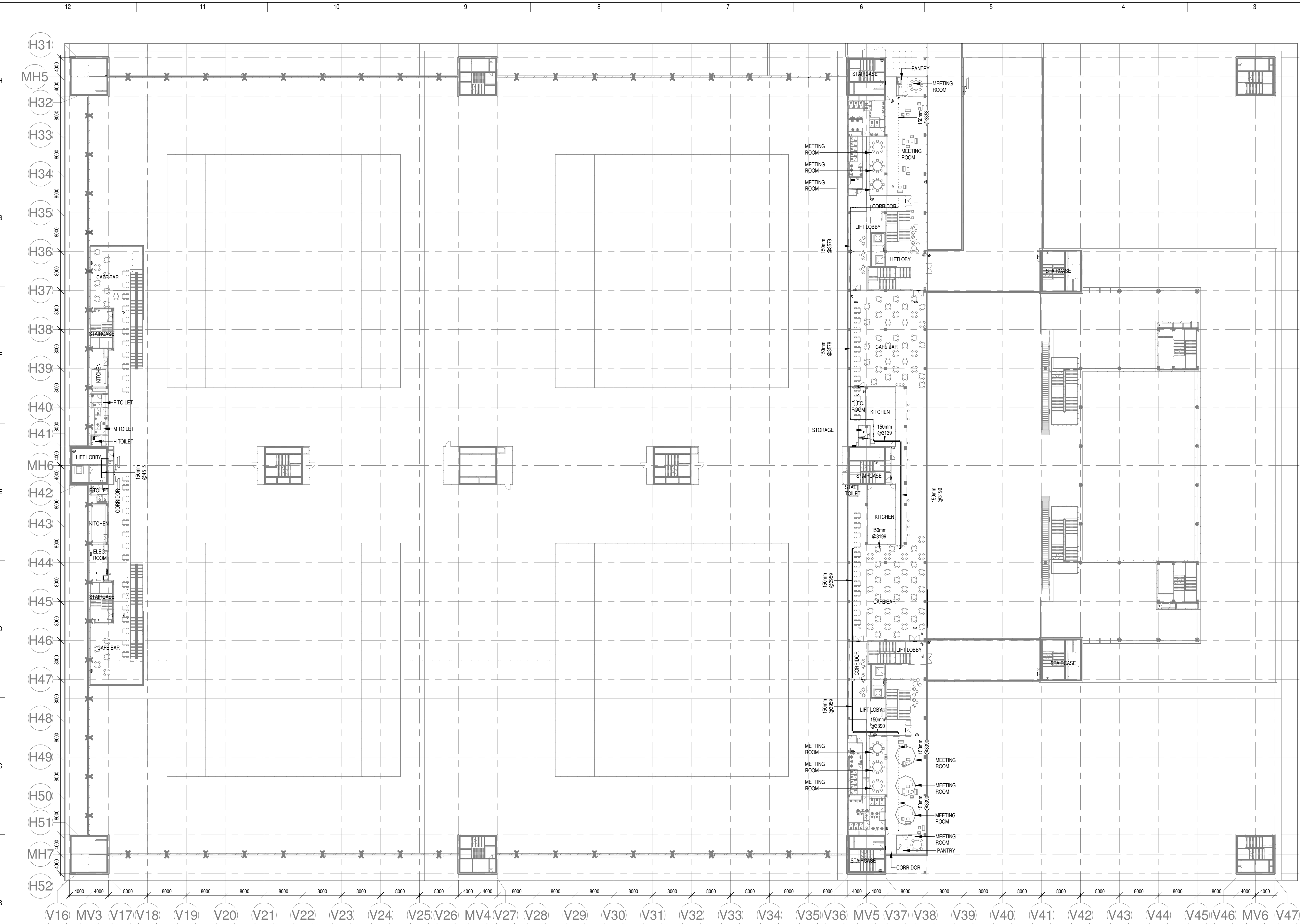
Sheet Size
A1



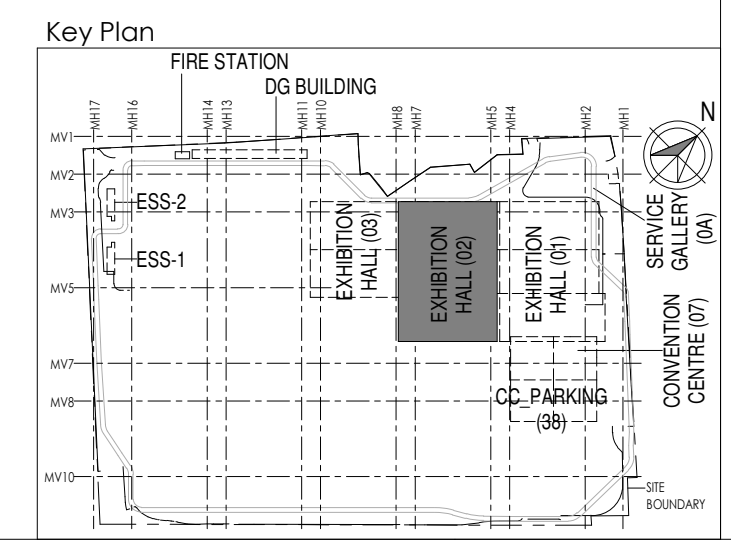
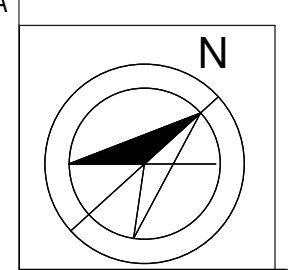
O17203 - L - SP - 02 - LV - 1000 (Exhibition Hall 2 + Foyer GF Over All ELV System Layout)


This drawing is the property of L&T Construction. B&F-EDRC and must not be passed on to any person or body not authorised by us to receive it nor be copied or otherwise made use either in full or in part by such person or body without our prior permission in writing.


O17203 - L - SP - 02 - LV - 1100 (Exhibition Hall 2 + Foyer 1F Over All ELV System Layout)





1 1F ELV OVER ALL SYSTEM LAYOUT
1 : 400





Owner / Employer
India International Convention & Exhibition Centre Limited
Room No. 452A, Ministry of Commerce & Industry, DIPP, Udyog Bhawan, New Delhi - 110011, India

Department of Industrial Policy and Promotion Ministry of Commerce & Industry Government of India


Knowledge Partner
Delhi Mumbai Industrial Corridor Development Corporation
Room No. 341 & 3rd Floor Hotel Ashok, Diplomatic Enclave, 508 Connaught Place, New Delhi - 110021



Employer's Representative
Employer's Engineer
Programme Management Consultant (PMC)
AECOM


Preliminary Engineering Architecture Consultants (PEAC)

Av. Del Monasterio de El Escorial, 4, 28049 Madrid, Spain

No.D-1, Ashirwad Building, Green Park, New Delhi, Delhi 110016, India

EPC Contractor

L&T Construction
Buildings & Factories
Mount Poonamallee Road, Manapakkam, P.O.No.979, Chennai - 600 089

EPC Contractor's Representatives
Design Consultant
Engineering Design and Research Center (EDRC)
L&T Construction - Buildings & Factories
Architectural Consultant

Arcop Associates Pvt. Ltd.
A-15, Pamposh Enclave, G.K-1 New Delhi, Delhi 110048, India

Structural Proof Consultant

Indian Institute of Technology (IIT) Madras
Sardar Patel Rd. Opposite to C. L.R.I. Adyar, Chennai, Tamil Nadu 600036

MEP Proof Consultant

Egis India Consulting Engineers Pvt. Ltd.
Plot No. 66, Sector 32, Institutional Area, Opp. Zenith Solutions, Gurgaon, Haryana 122001

ICT Proof Consultant

CCR Consulting Engineers Pvt. Ltd.
#47/1, 3rd Floor, Narayana Arcade, Subbaramachetty Road, Neelakappa Circle, Basavanagudi, Bengaluru - 560004

Certification
EPC Contractor
Design Consultant
Architectural Consultant
Proof Consultant

Structural	MEP	ICT


PEAC
Issued by:
Employer / Employer's Engineer

REV	DESCRIPTION	DATE	DSGN	DRWN	CHKD	APPD
R0	ISSUED AS GOOD FOR CONSTRUCTION	27-08-2019	SP	PSY	MSK	GMR

Revisions

ARCHITECTURE	PIPING	FPS
STRUCTURAL	PHE	-
ELECTRICAL	GIS	-
ELV SYSTEM	GEOTECH.	-
HVAC	-	-

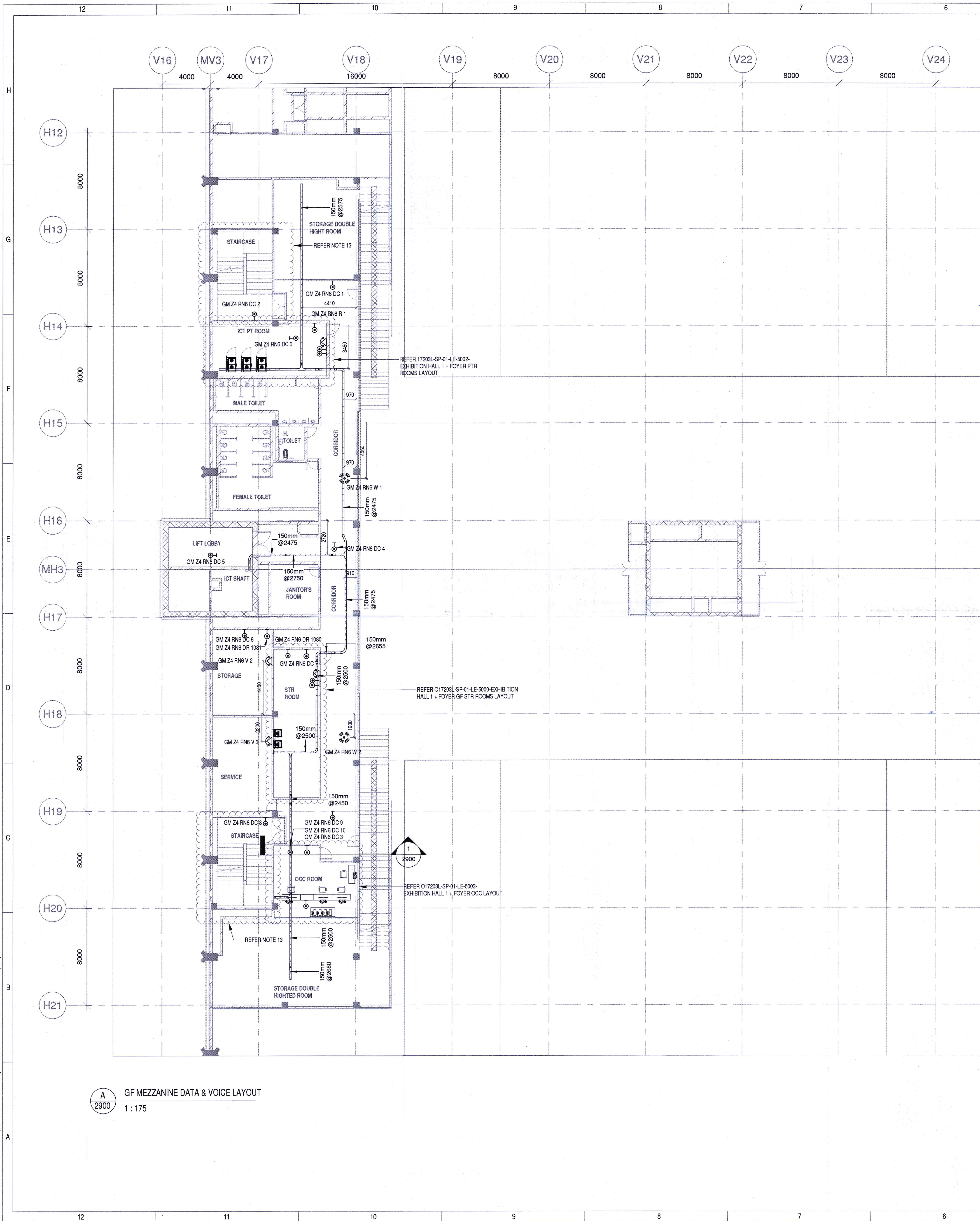
CHECKED BY	SIGN	DATE	CHECKED BY	SIGN	DATE

EPC Contractor

L&T Construction
Buildings & Factories
JOB No : O17203
Project Name
DESIGN AND CONSTRUCTION OF INDIA INTERNATIONAL CONVENTION & EXPO CENTRE SECTOR 25, DWARKA, NEW DELHI, INDIA
Drawing Status
GOOD FOR CONSTRUCTION (GFC)
Drawing No
L 02 1100 R0
Rev. No

Title :
EXHIBITION HALL-02
Exhibition Hall 2 + Foyer 1F Over All ELV System Layout
EDRC DWG No : O17203 - L - SP - 02 - LV - 1100
Scale 1 : 400
Sheet Size A1

This drawing is the property of L&T Construction. B&F-EDRC and must not be passed on to any person or body not authorised by us to receive it nor be copied or otherwise made use either in full or in part by such person or body without our prior permission in writing.

O17203 - L - SP - 01 - DV - 2900 Exhibition Hall 1 + Foyer Mezzanine Over All Data & Voice Layout

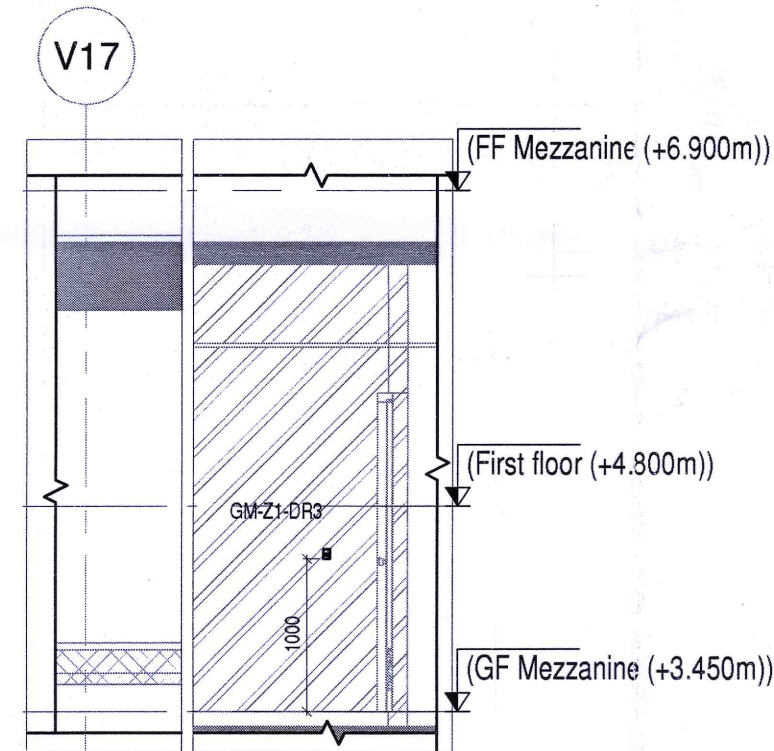


- NOTES:**
- CONDUITS IN EXPOSED MS CONDUIT TO BE USED.
 - OVER FALSE CEILING UNDER FLOOR OR EMBEDDED PVC CONDUITS TO BE USED.
 - PULL BOXES WITH SUITABLE SIZE SHOULD BE PROVIDED IN ALL CONDUIT SECTIONS THAT ARE CONTAINING MORE THAN TWO 90 DEGREE BENDS.
 - ALL DEVICES LOCATIONS AND ORIENTATION ARE INDICATIVE. EXACT LOCATION SHALL BE SHOWN IN THE DEM SHOP DRAWING.
 - THIS DRAWING IS ONLY INDICATIVE AND MAY VARY ACCORDING TO SITE CONDITION AND REQUIREMENT.
 - THE EXACT CONDUIT/ TRAY ROUTING SHALL BE DECIDED AT SITE IN CONSULTATION WITH THE ENGINEER INCHARGE TO SUIT LEVEL AND SITE CONDITION.
 - CABLE TRAY SUPPORT MUST ALSO BE PLACED WITHIN 0.60 METERS ON EACH SIDE OF ANY CONNECTION TO A FITTING.
 - A MINIMUM SEPARATION DISTANCE OF 300MM AND SHOULD BE KEPT PHYSICALLY BETWEEN LIGHT CURRENT CABLES AND MEDIUM VOLTAGE CABLES.
 - METALLIC PERFORATED TYPE HOT DIP GALVANIZED CABLE TRAY FOR ICT.
 - ALL NETWORK/ACS CABLES TO BE CONNECTED IN STR ROOM.
 - FOR DIGITAL SIGNAGE SYSTEM, AV SYSTEM & BGM REFER AV SYSTEM LAYOUT.
 - REFER STAIRCASE ELECTRICAL LIGHTING LAYOUT FOR ELV EQUIPMENT'S LOCATIONS IN STAIRCASE.
 - ACCESS CONTROLLER TO BE PLACED ABOVE THE DOOR- SECURED SIDE INACCESSIBLE FROM PUBLIC.
- DATA & VOICE**
- 4 PAIR 23 AWG CAT5A UTP CABLE TO BE USED TO CONNECT RJ 45 DATA/VOICE SOCKETS TO JACK PANEL.
 - WHEREVER POWER AND LV CABLES ARE RUNNING IN PARALLEL, THEY SHALL BE SEPARATED BY A DISTANCE OF MINIMUM 300MM.
 - AREAS AND MEP ROOMS CABLES FOR DATA & VOICE SHALL BE TAKEN FROM CEILING CONDUIT.
 - ALL WALL MOUNTED 1R1C DATA/VOICE SOCKETS COULD BE ALIGNED AT A HEIGHT OF 750MM FROM FFL UNLESS AND OTHERWISE SPECIFIED SOCKETS ABOVE COUNTER SLABS TO BE MOUNTED AT A HEIGHT OF 900MM FROM FFL SOCKETS IN PLANT ROOMS TO BE MOUNTED AT A HEIGHT OF 900MM FOR ALL OTHER TELEPHONE AND DATA SOCKETS THE LEVEL SHALL BE MAINTAINED AS PER FURNITURE LAYOUT AND ARCHITECTURAL CONCURRENCE AS PER SITE CONDITION.
 - FINAL DATA/VOICE POINTS LOCATION BASED ON FINAL FURNITURE LAYOUTS.
- DAS**
- THE DAS SYSTEM FOR MOBILE CARRIERS WILL BE DONE AFTER SITE SURVEY BY SPECIALIST ONCE STRUCTURE IS READY AND EPC WILL ENSURE THE DAS COVERAGE.

Sl. No	SYMBOL	DESCRIPTION	FIXING LEVEL
1		DATA SOCKET	SURFACE / WALL MOUNTED
2		WIFI	SURFACE MOUNTED
3		VOICE SOCKET	WALL MOUNTED
4		300MM W x 50MM H METALLIC PERFORATED TYPE CABLE TRAY	

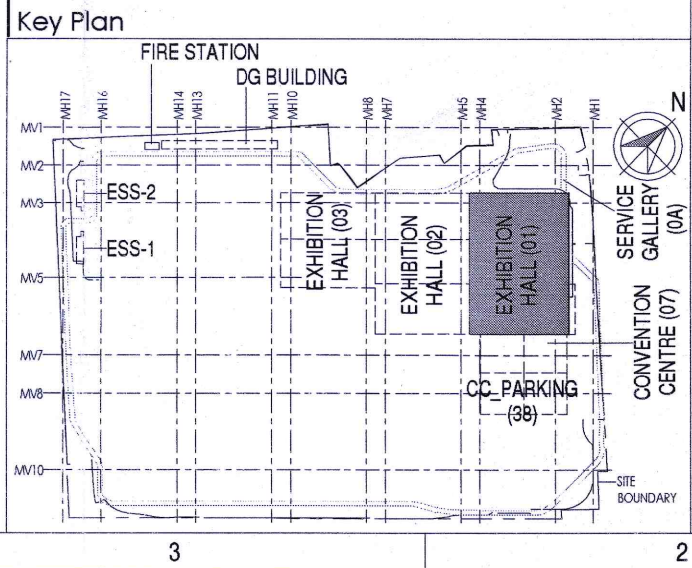
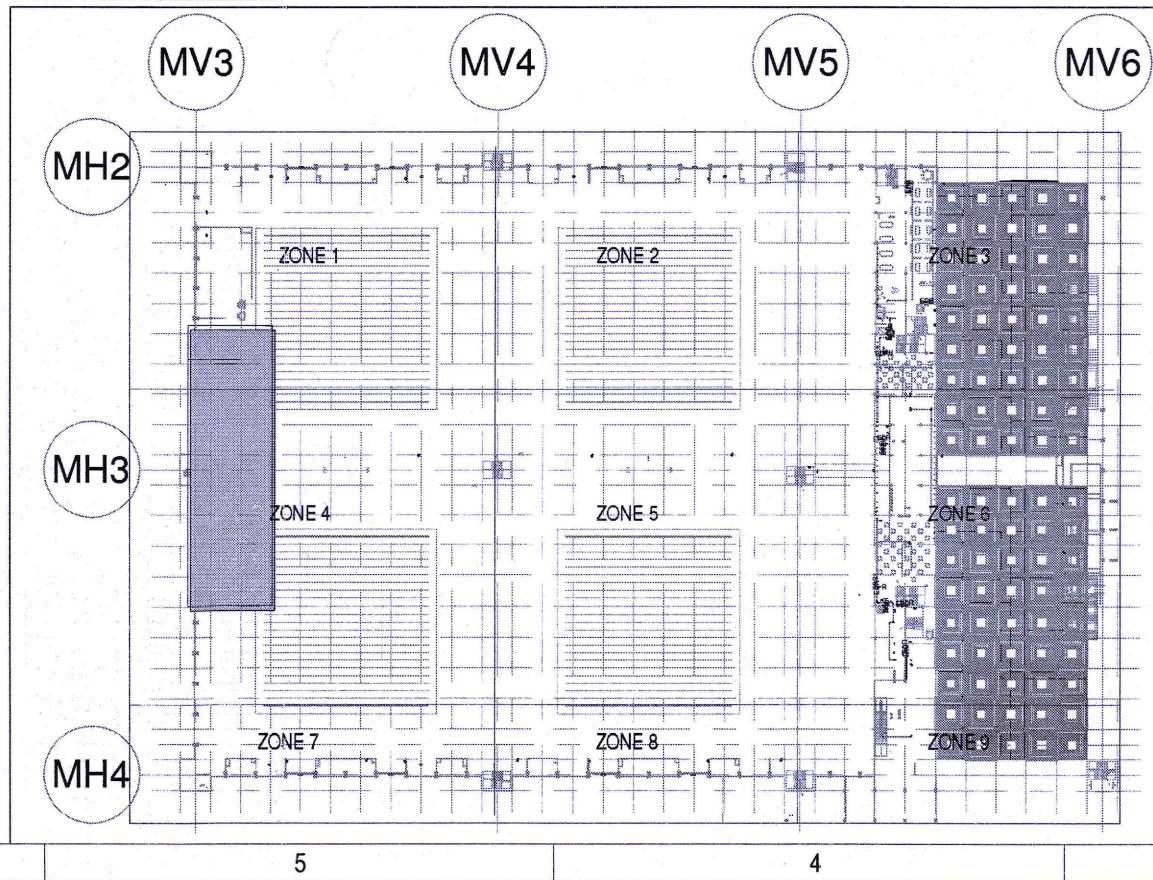
ABBREVIATION

V - VOICE SOCKET
D - DATA SOCKET
W - WIFI
DC - DATA SOCKET FOR CAMERA
DV - DATA & VOICE
DR - ACS SOCKET
DS - DIGITAL SIGNAGE SOCKET
PD - PAYMENT KIOSK DATA SOCKET



1	2900	SECTION 1	1 : 50
TAG DETAIL: DATA	TAG DETAIL: VOICE	TAG DETAIL: WIFI	
GF- Z0 - RN1 - D01	GF- Z0 - RN1 - V01	GF- Z0 - RN1 - W01	
DATA NUMBER	VOICE NUMBER	WIFI NUMBER	
RACK NUMBER	RACK NUMBER	RACK NUMBER	
ZONE NUMBER	ZONE NUMBER	ZONE NUMBER	
GROUND FLOOR	GROUND FLOOR	GROUND FLOOR	
TAG DETAIL: DATA FOR CAMERA	TAG DETAIL: DATA & VOICE	TAG DETAIL: DATA FOR ACS	
GF- Z0 - RN1 - D01	GF- Z0 - RN1 - DV1	GF- Z0 - RN1 - DR1	
CAMERA NUMBER	DATA & VOICE	ACS NUMBER	
RACK NUMBER	RACK NUMBER	RACK NUMBER	
ZONE NUMBER	ZONE NUMBER	ZONE NUMBER	
GROUND FLOOR	GROUND FLOOR	GROUND FLOOR	

ELV ZONE DEMARCATION



Owner / Employer

India International Convention & Exhibition Centre Limited
Room No. 452A, Ministry of Commerce & Industry, DFF, Udyog Bhawan, New Delhi - 110011, India

Department of Industrial Policy and Promotion Ministry of Commerce & Industry Government of India

Knowledge Partner

Delhi Mumbai Industrial Corridor Development Corporation
Room No. 341 & 3rd Floor Hotel Ashok, Diplomatic Enclave, 508 Chanakya Park, New Delhi - 110021

Employer's Representative

Programme's Engineer
Programme Management Consultant (PMC)

AECOM

Preliminary Engineering Architecture Consultants (PEAC)

idom **CPKUREJA**
Av. Del Monasterio de El Escorial, 4, 28049 Madrid, Spain
No. 31, Ashwini Building, Green Park, New Delhi, Delhi 110016, India

EPC Contractor

L&T Construction
Buildings & Factories
Mount Poonamallee Road, Manapakkam, P.B.No.979, Chennai - 600 089

EPC Contractor's Representatives

Design Consultant
Engineering Design and Research Center (EDRC)
L&T Construction - Buildings & Factories

Architectural Consultant

ARCOP **Atrop Associates Pvt. Ltd.**
A-15, Pampore Enclave, G.K-1, New Delhi, Delhi 110048, India

Structural Proof Consultant

Indian Institute of Technology (IIT) Madras
Sardar Patel Rd, Opposite to C.L.R.I, Adyar, Chennai, Tamil Nadu 600036

MEP Proof Consultant

Egis India Consulting Engineers Pvt. Ltd.
Plot No. 46, Sector 32, Institutional Area, Opp. Zenith Solutions, Gurgaon, Haryana 122001

ICT Proof Consultant

CKR Consulting Engineers Pvt. Ltd.
#47/1, 3rd floor, Narayana Arcade, Subramaniam Road, Nellore, Andhra Pradesh, Basavanagudi, Bengaluru - 560004

Certification

EPC Contractor

Design Consultant

Architectural Consultant

Proof Consultant

Structural **MEP** **ICT**

Reviewed GFC drawing and ensured that all provisions, standards and regulations have been adhered to:

Issued by: **Employer / Employer's Engineer**

RO ISSUED AS GOOD FOR CONSTRUCTION 31-07-2019 SP PSY MSK GNR

Revisions

ARCHITECTURE	PSY	MSK	GNR
STRUCTURAL	PIPPING		
ELECTRICAL	PHE		
ELV SYSTEM	GIS		
HVAC	GEOTECH.		
CHECKED BY	SIGN	DATE	CHECKED BY

EPC Contractor

L&T Construction
Buildings & Factories

JOB No : O17203

Project Name
DESIGN AND CONSTRUCTION OF INDIA INTERNATIONAL CONVENTION & EXPO CENTRE
SECTOR 25, DWARKA, NEW DELHI, INDIA

Drawing Status
GOOD FOR CONSTRUCTION (GFC)

Drawing No **Rev. No**

L	01	2900	R0
---	----	------	----

Title :
EXHIBITION HALL-01
Exhibition Hall 1 + Foyer Mezzanine Over All Data & Voice Layout

EDRC DWG No :
O17203 - L - SP - 01 - DV - 2900

Scale **Sheet Size**
As indicated A1

This drawing is the property of L&T Construction. It is EPC and must not be passed on to any person or body not authorized by us to receive it or to be used in full or in part by such person or body without our prior permission in writing.